



DRONES 1

UTILISING DRONES FOR ROOF SURVEYING

2019
EDITION

WE PROVIDE HIGH-RESOLUTION 4K INFRASTRUCTURAL PHOTOS AND VIDEOS



Our aerial surveys remove the hassle, time and costs associated with traditional inspection methods using scaffolding and cherry pickers.

Our UAV inspections reduce health and safety risks and minimise disruption to your operations.

**OUR AERIAL INSPECTIONS CAN USUALLY
BE CARRIED OUT WITHIN A COUPLE OF
HOURS WITH MINIMAL INTERRUPTION TO
YOUR OPERATION**





**ALL OF OUR PILOTS ARE CAA APPROVED
AND FULL AWARE OF BOTH UK AND
INTERNATIONAL AIR REGULATIONS.**

**WE CARRY £5M PUBLIC LIABILITY
INSURANCE AS STANDARD. THIS CAN OF
COURSE BE INCREASED AT OUR CLIENTS
REQUEST.**

THE PROCESS

Our Drone-based roofing solutions offer unrivalled accuracy, safety, and speed for roof measurement and analysis. Within hours we can produce accurate measurements, from square footage to pitch to roof features. This roof geometry can be delivered as a DXF file compatible with your existing tools for CAD analysis and design. These reports serve as a powerful tool for commercial roofers, solar installers or insurance adjusters.

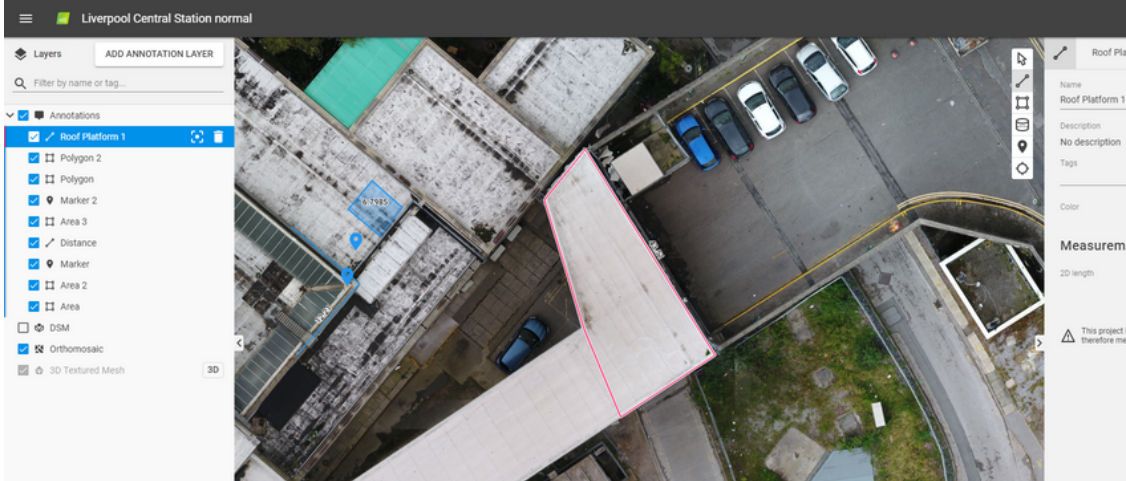
During the flight a live-stream is transmitted to us on the ground allowing the client to direct us if required.



POST-FLIGHT

Once the inspection is complete we process this information and can share the results with you on a cloud based platform within 24 hours.

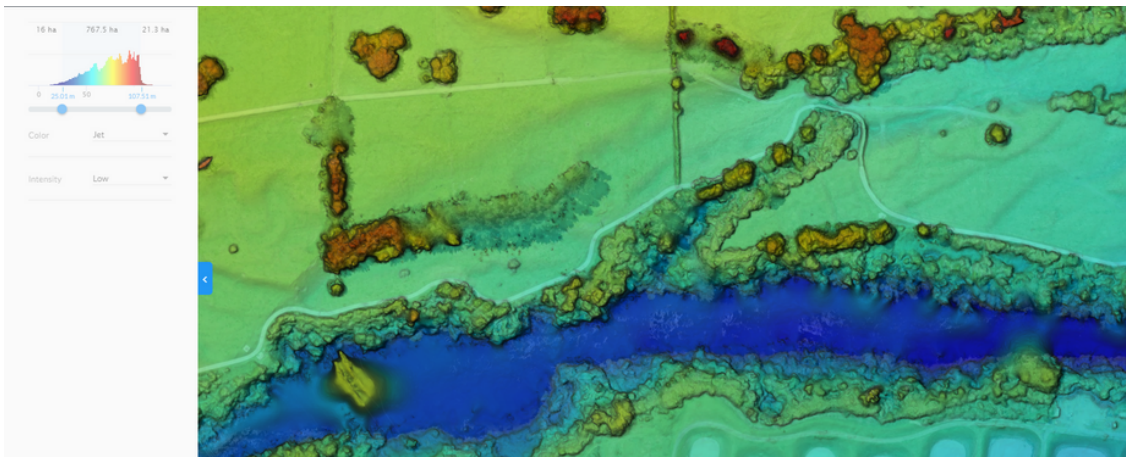
INTERACTIVE 3D MODEL



DISTANCE AND VOLUMETRIC CALCULATIONS



ELEVATION AND TERRAIN MODELLING



POST-PROCESSING

With our aerial site surveys we can produce geotagged Orthomosaic Maps, 3D models and CAD overlays quickly and efficiently.

These high resolution aerial data sets provide real-time insights to your site. Our Orthomosaic maps are built from a series of individual photos which, when combined using our software, form a detailed composite image.

These maps can be used to make both distance and volumetric measurements with survey-grade precision. We can export our data in a variety of forms (BIM, CAD, GIS, and more), allowing you to integrate the data with your preferred existing software choice. This allows customers, collaborators and shareholders to explore a complete 360 degree perspective of the site remotely. These can be stored in the cloud and are easily accessed from anywhere in the world.

PRICING

Our rates are the most competitive in the South of England starting at £150 for an hour on site. Subsequent additional hours are charged at £120 per hour.

Post processing, analysis, mapping and the creation of 3D models incur additional costs and can be included in quotation at the clients request.

A silhouette of a construction site at sunset. The sky is a mix of orange and brown tones. In the foreground, several vertical concrete pillars with rebar protruding from the top are visible. In the middle ground, two workers are silhouetted against the bright sun, which is partially obscured by a structure. A horizontal yellow line is drawn across the image, passing behind the text.

**FOR FURTHER INFORMATION PLEASE VISIT
OUR WEBSITE AT WWW.DRONES1.CO.UK
OR CONTACT US AT
INFO@DRONES1.CO.UK**